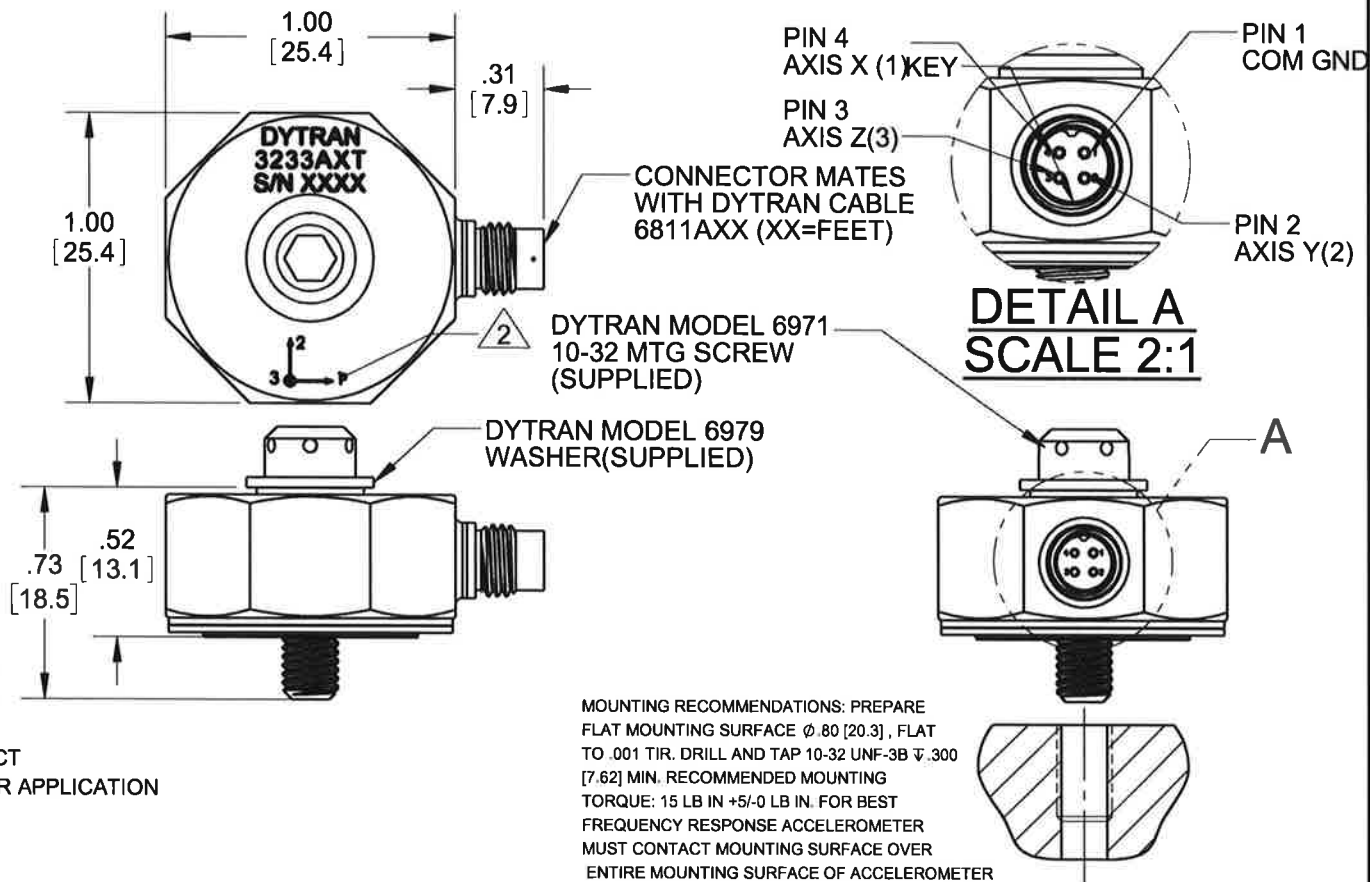


THE INFORMATION CONTAINED IN THIS DRAWING IS THE SOLE PROPERTY OF DYTRAN INSTRUMENTS INC. ANY REPRODUCTION IN PART OR AS A WHOLE WITHOUT THE WRITTEN PERMISSION OF DYTRAN INSTRUMENTS INC. IS PROHIBITED

MODEL	SENSITIVITY
3233A2T	5mV/g
3233A3T	1mV/g
3233A4T	25mV/g
3233A5T	10mV/g

REVISIONS

REV	ECN	DESCRIPTION	BY/DATE	CHK	APPR
D	12604	ADDED NOTE 4	JS 04/05/13	LA	W



4. MINOR VOIDS, SCARS, SCRATCHES AND MOUNTING BLEMISH/WITNESS MARKS ON EXTERIOR SURFACES ARE ALLOWED DUE TO RESTRAINING AND HANDLING DURING TESTING, TRANSPORT OR PROCESSING. THESE APPEAR AS INDICATORS THAT DO NOT AFFECT FORM, FIT OR FUNCTION AS INTENDED BY DESIGN OR APPLICATION
3. WEIGHT: 30 GRAMS MAX

ARROWS INDICATE DIRECTION OF ACCELERATION FOR POSITIVE OUTPUT.

1. MATERIAL: TITANIUM ALLOY
 NOTES: UNLESS OTHERWISE SPECIFIED

MOUNTING RECOMMENDATIONS: PREPARE FLAT MOUNTING SURFACE $\phi .80 [20.3]$, FLAT TO .001 TIR. DRILL AND TAP 10-32 UNF-3B $\nabla .300 [7.62]$ MIN. RECOMMENDED MOUNTING TORQUE: 15 LB IN ± 5 -0 LB IN. FOR BEST FREQUENCY RESPONSE ACCELEROMETER MUST CONTACT MOUNTING SURFACE OVER ENTIRE MOUNTING SURFACE OF ACCELEROMETER

USED ON	NEXT ASSY	UNLESS OTHERWISE SPECIFIED: INTERPRET DIM & TOL PER ASME Y14.5M - 1994. REMOVE BURRS. COUNTERSINK INTERNAL THDS 90° TO MAJOR DIA. CHAM EXT THDS 45° TO MINOR DIA. THD LENGTHS AND DEPTHS ARE FOR MIN FULL THDS. THDS PER MIL-S-7742. DIMENSIONS APPLY AFTER FINISHING.	UNLESS OTHERWISE SPECIFIED: DIMENSIONS ARE IN INCHES. DIMENSIONS IN BRACKETS [] ARE IN MILLIMETERS TOLERANCES ARE: INCHES METRIC ANGLES .XX $\pm .03$ X ± 0.8 $\pm 1^\circ$.XXX $\pm .010$ XX ± 0.25
APPLICATION			
THIRD ANGLE PROJECTION USA		ALL MACHINED SURFACES. TOTAL RUNOUT WITHIN .005. BREAK SHARP EDGES .005 TO .010. MACHINED FILLET RADII .005 TO .015. WELDING SYMBOLS PER AWS A2.4. ABBREVIATIONS PER MIL-STD-12.	MATERIAL FINISH DO NOT SCALE DRAWING

CONTRACT NO.



TITLE:

OUTLINE/INSTALLATION DRAWING, 3233A2T

APPROVALS		DATE
ORIG	RA	06/14/13
CHK	EM	06/30/13
APP	RT	08/02/13
APP	DV	10/01/14

SIZE	CAGE CODE	DWG. NO.	REV
A	2W033	127-3233A2T	D
SCALE: NONE		SOLIDWORKS	SHEET 1 OF 1

MODEL NUMBER 3233A2T	PERFORMANCE SPECIFICATION	DOC NO. PS3233A2T
ACCELEROMETER, TRIAXIAL, IEPE		REV C, ECN 12219, 09/08/15



- **TEDS CAPABILITY**
- **HERMETICALLY SEALED**
- **CASE ISOLATION**
- **10-32 MOUNTING PROVISION**

PHYSICAL

Weight, Max

ENGLISH		SI	
1.05	oz	30	grams
10-32 Screw		10-32 Screw	
4-PIN		4-PIN	
Titanium Alloy		Titanium Alloy	

Mounting

Connector Type [1]

Material, Case/ Connector

PERFORMANCE

Sensitivity, +/-10% [2]

Range, Full Scale (Each Axis)

Frequency Range Axis 1 & 2, +/-10%

Frequency Range Axis 3, +/- 10%

Element Natural Frequency

Equivalent Electrical Noise

Linearity [3]

Transverse Sensitivity Max

5	mV/g	0.5	mV/m/s ²
1000	Gpeak	9810	m/s ² peak
.4 to 3000	Hz	.4 to 3000	Hz
.4 to 6000	Hz	.4 to 6000	Hz
>20	kHz	>20	kHz
0.01	g rms	0.098	m/s ² rms
±1	%F.S.	±1	%F.S.
6	%	6	%

ENVIRONMENTAL

Shock Max

Vibration Max

Operating Temperature

TEDS Operating Temperature

Seal

5000	g pk	49050	m/s ²
1500	g pk	14715	m/s ²
-60 to +302	°F	-51 to +150	°C
-40 to +185	°F	-40 to +85	°C
Hermetic		Hermetic	

ELECTRICAL

Supply Current Range [4]

Compliance Voltage Range (Each Axis)

Output Impedance, Typ.

Output Bias Voltage

Discharge Time Constant

Ground Isolation, Min.

TEDS Feature

2 to 20	mA	2 to 20	mA
+18 to +30	VDC	+18 to +30	VDC
100	Ω	100	Ω
+7.5 to +9.5	VDC	+7.5 to +9.5	VDC
1.0 to 2.0	Sec	1.0 to 2.0	sec
10	MΩ	10	MΩ
IEEE 1451.4		IEEE 1451.4	

This family also includes:

Model	Sensitivity (mV/g)	Range (Gpeak)	Resolution (Grms)	Oper. Temp(°F)	TC
3233A3T	1	5000	0.04	-60 to 302	1 to 2
3233A4T	25	200	0.002	-60 to 302	1 to 2
3233A5T	10	500	0.005	-60 to 302	1 to 2

Refer to the performance specifications of the products in this family for detailed description.

Supplied Accessories:

1) Accredited Calibration Certificate (ISO 17025)

2) Washer 6979 and Mounting Screw 6971

Notes:

[1] Connector mates with Dytran Cable Assy. Model 6811 AX. (XX = Length in feet)

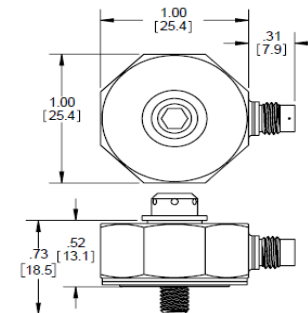
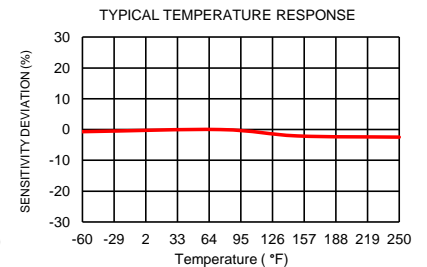
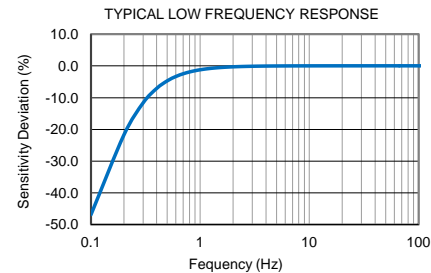
[2] Measured At 100 Hz, 1 Grms per ISA RP 37.2

[3] Measured using zero-based best straight-line method, % of F.S. or any lesser range.

[4] Do not apply power to this device without current limiting, 20mA max, to do so will destroy the integral IC amplifier

[5] Case grounded to signal, ground case isolated from mounting surface

[6] In the Interest of constant product improvement, we reserve the right to change specifications without notice.



Units on the line drawing are in inches, units in brackets are in millimeters. Refer to 127-3233A2T for more information.



21592 Marilla Street, Chatsworth, California 91311 Phone: 818.700.7818 Fax: 818.700.7880
www.dytran.com For permission to reprint this content, please contact info@dytran.com